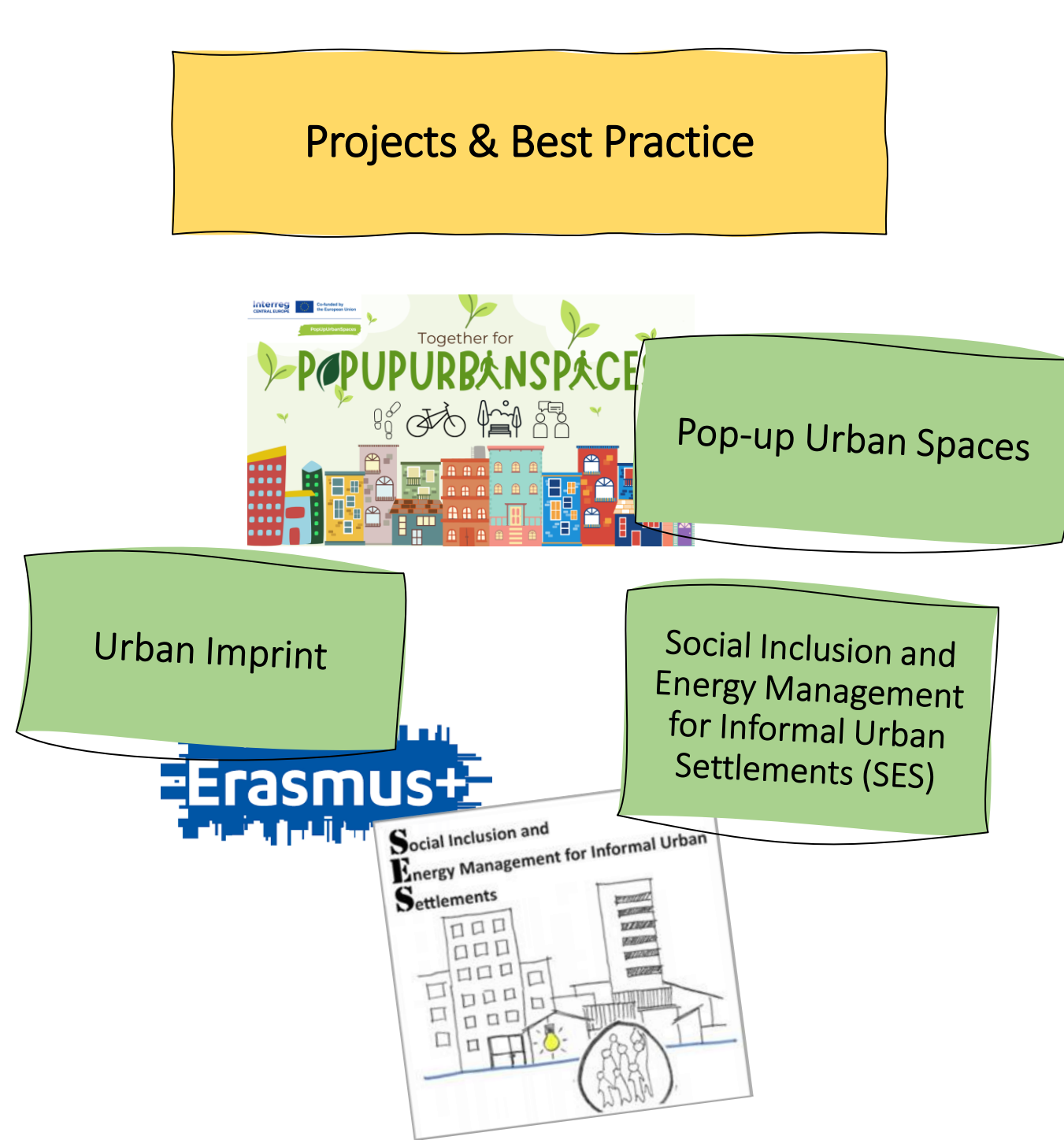


# Urban Living Labs

UniNETZ Track bei der 2<sup>nd</sup> Global Transdisciplinarity Conference – 2<sup>nd</sup> GTdC (27./28.06.2024)  
Christine Rottenbacher, Stefanie Kotrba (Universität für Weiterbildung Krens) / Sophie Marie Hohenwarter, Holger Hoff (Universität Graz)

## The Track Urban Living Labs / Krens

The aim of the Track was to discuss and promote Living Labs as a participatory action research method for co-developing sustainable solutions between scientists and other societal actors, in the context of the current poly crises humanity is confronted with, identifying positive approaches. The Track provided a platform for exchanging experiences and best practice examples and for addressing challenges and opportunities, with a focus on Living Labs as collaborations of universities with the city they are located in. In these collaborations universities serve as innovation hubs, incubators and test-beds for solutions that can be upscaled to the city level and beyond.



### Urban Living Labs – Theorie / Praxis / Austausch / Anwendung

Im Rahmen von **SP I - Transdisziplinärer Dialog mit der Gesellschaft** haben die Universität Graz und die Universität für Weiterbildung Krens den Track Urban Living Labs für die GTdC in Krens gestaltet. **Zwei Keynotes** sorgten für spannende Denkanstöße:

- Gert Breiffuss „Erfolgsstrategien für Aufbau und Betrieb von Living Labs“ und
- Christine Rottenbacher „Contact Processes and Knowledge Integration - Relationship with Nature and Places“.

Im laufenden **Projekt Pop-up Urban Spaces** waren wir mit einem Place Assessment (individuelle Bewertung eines Platzes im öffentlichen Raum) Teil eines Real Urban Living Labs in Krens.

**Der internationale Austausch** fand online mit Projektpartner:innen aus dem **Urban Imprint Erasmus+ Projekt** sowie dem **European Network of Living Labs (ENoLL)** statt, u.a. zur Frage, wie Living Labs als transdisziplinärer Ansatz zur Transformation unserer Gesellschaft und Wirtschaft beitragen könnten.



### Some Guidance

Living Labs (LLs) as well-established transdisciplinary format (“research infrastructure”) may help to speed up the (co-)development and implementation of sustainable solutions and transformations. At the GTdC Track it was pointed out that the link between cities and their university can work both ways:

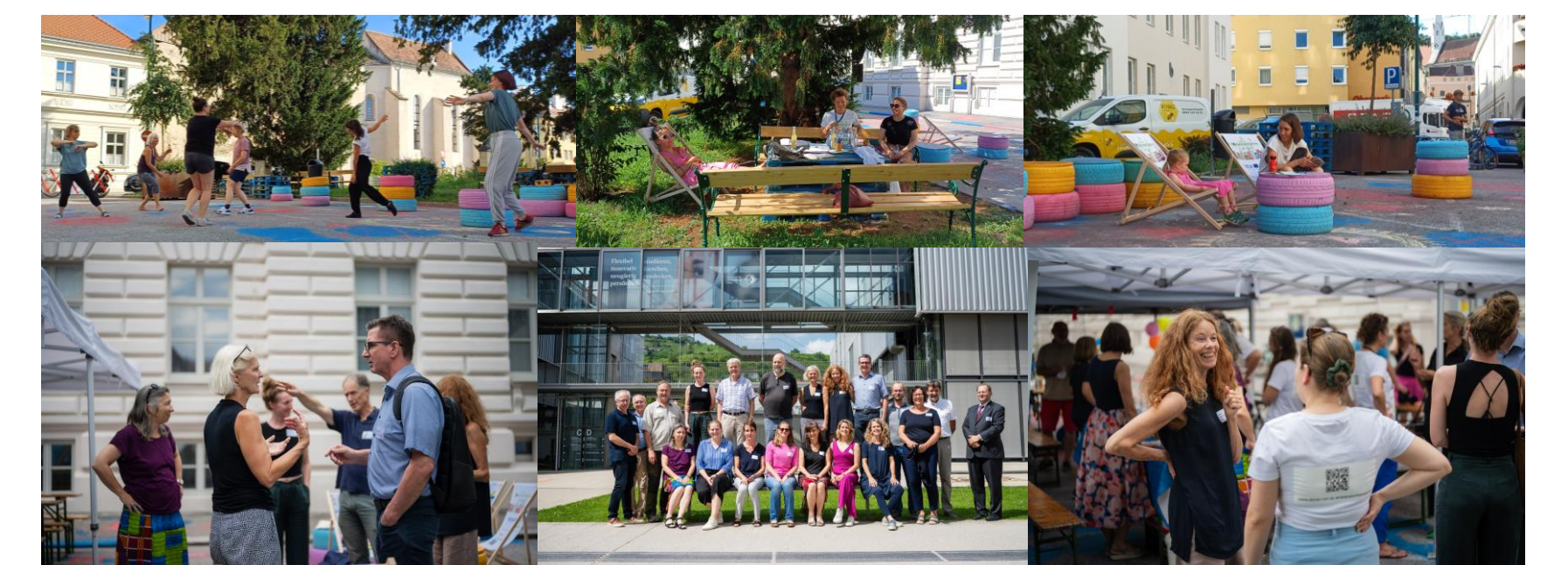
- starting from urban sustainability / climate agendas” which are supported by scientific evidence
- starting from initiatives on campus (universities as innovators & incubators) which are scaled up to the city level

#### Some guidance for urban-university LLs that emerged from the session:

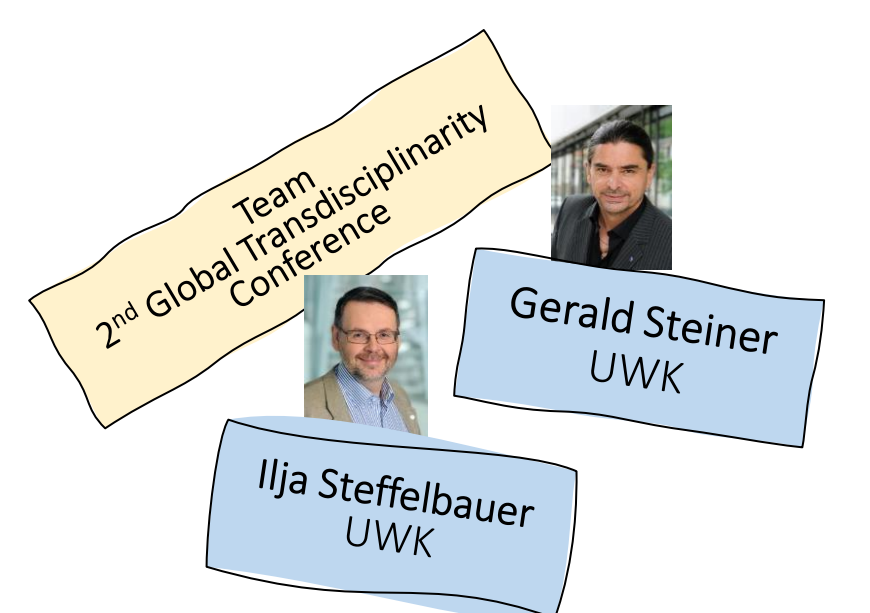
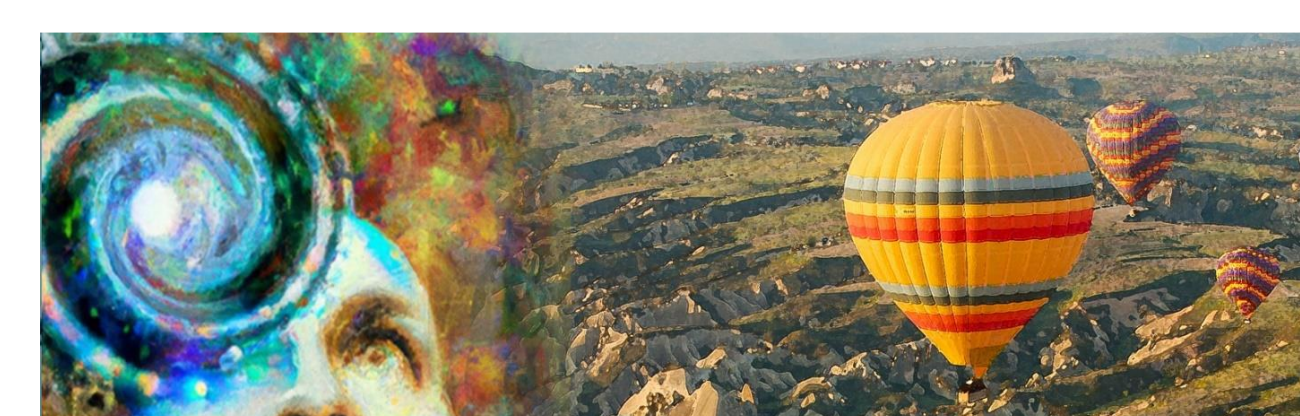
- **move from vision to mission** to methods, roles & responsibilities (form follows function)
- **use the dynamic of an exchange by walking** through the shared “Lebensraum” to identify together place attachment and place meanings for integrating emotion, motivation, and a shared knowledge about streets and places
- an **active user involvement** throughout the whole time should support the process of building trust for assessments and experiments, experiencing each other in the here and now
- using the effects of **co-creation in real-life settings** for related knowledge integration
- begin by **defining USP** (profile, co-creators, customers) to make the LL viable
- when developing the network of partners, **start from coalition of the willing**, later bring on board the opponents by presenting convincing solutions
- **build ownership** in a broad consortium with all relevant actors
- **go to your “customers”**, work with them in their context, rather than inviting them to the university
- provide a level playing field for all, **develop “literacy”** and learn from each other, from best practices but also from failures
- strengthen social sciences and **social innovations** in the LLs
- ensure **financial sustainability** by diversifying financial resources, start early to identify follow up funding beyond the initial grant - getting funding for starting a LL is easier than for its continuation / long term operation

**ENoLL the European Network of LLs** has extensive experience, which can benefit also UniNETZ and its members, e.g. through its working groups on campus / urban / transition LLs

The **UniNETZ city walks** (“UniNETZ bewegt”) which were also addressed in the GTdC session, may define themes and initial consortia for new city-university LLs. For that it needs some institution to synthesize experiences, provide a platform and maintain the momentum.



Eindrücke GTdC Krens & Pop-up Urban Spaces



### 2<sup>nd</sup> Global Transdisciplinarity Conference / Cappadocia, Turkey & Krens, Austria

The GTdC focused on coping with the current poly crisis, of which climate change, biodiversity loss, refugee crises, and recent wars in Ukraine and the Middle East are symptomatic. As a whole it has threatening implications for social peace, ecological equilibrium, the world economy, health and the well-being of all lifeforms. The complexity of these threats and the hardly predictable mutual spill-over effects require new approaches. The methodologically conditioned views of the individual scientific disciplines fail us here, because they enforces results that do not reflect the whole. Transdisciplinary thinking and acting transcend the system-boundaries within and between fragmented disciplines by integrating all kinds of empirical knowledge, arts as well as spiritual wisdom and philosophical reflection. In this sense, the conference wanted to contribute to overcoming the limitations of the post-enlightenment view and its claim to dominion over nature.

